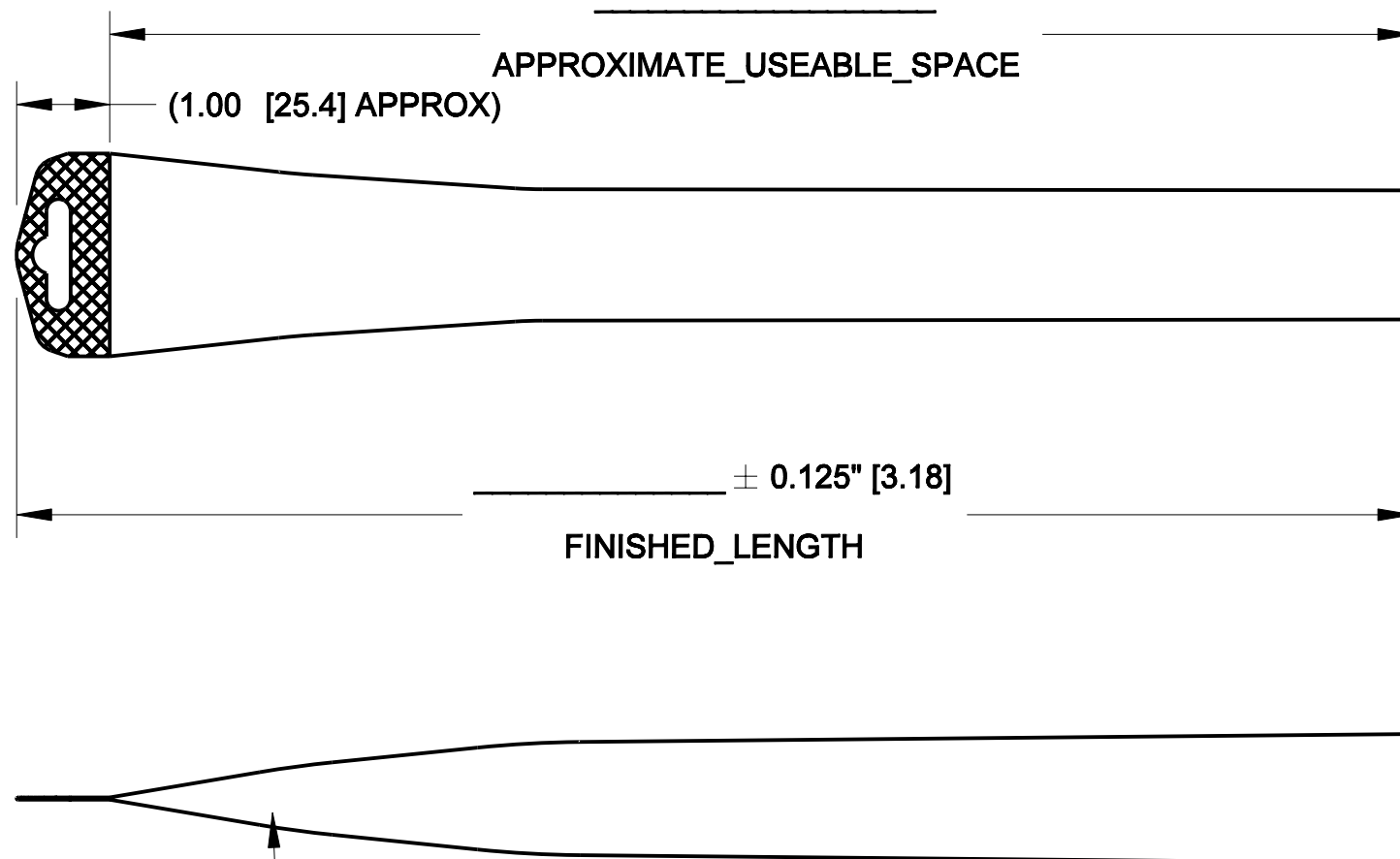
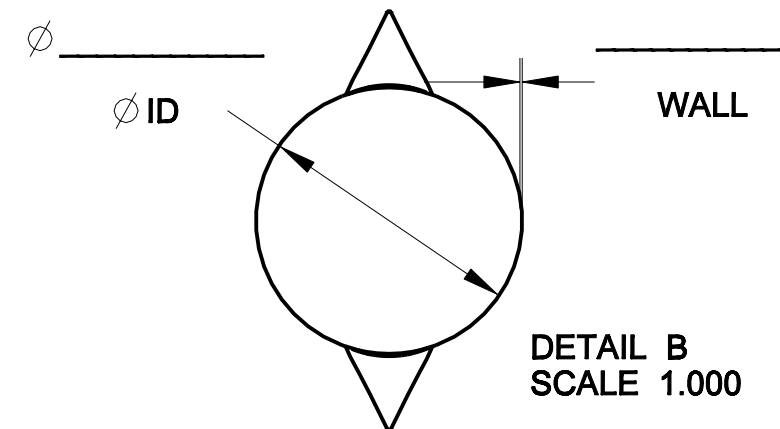
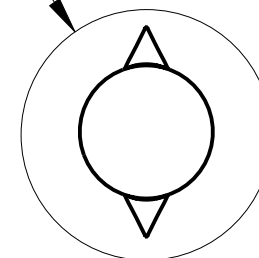


REV	DESCRIPTION	DATE	BY	APP
1	ADDED BLANKS	30-APR-09	MBH	






NOTE:
USEABLE AREA IS DETERMINED BY CUSTOMER AND PRODUCT PACKAGED.
NOT ALL PARTS WILL FIT TO END OF TUBE.

SEE DETAIL B



NOTES:
1. MATERIAL: PETG
COLOR: CLEAR
2. DIMENSIONS IN [] ARE METRIC

*SALES: EXTRUDED TUBE LENGTH IS 0.250" [6.35] LONGER THAN FINISHED LENGTH

 SINCLAIR & RUSH, INC. 123 MANUFACTURERS DRIVE ARNOLD, MO 63010 www.sinclair-rush.com	STOCKCAP. GRIPWORKS. VISIPAK. www.stockcap.com www.gripworks.com www.visipak.com	
	VynaFlex™ www.vynaflex.com	 www.software.com
THIS DOCUMENT CONTAINS CONFIDENTIAL INFORMATION OF SINCLAIR & RUSH INC. AND IS NOT TO BE COPIED, USED OR, DISCLOSED TO OTHERS WITHOUT THE EXPRESS WRITTEN CONSENT OF SINCLAIR & RUSH INC.		
TOLERANCES (UNLESS OTHERWISE SPECIFIED): DECIMALS .XXX ANGLES ±1°	ALL DIMENSIONS AND SYMBOLS CONFORM TO ANSI Y14.5	DRW MBH DATE 29-APR-09 CK PB DATE 29-APR-09 APP PB DATE 29-APR-09
		SCALE 0.500
DESCRIPTION GENERIC HANG TUBE PAK		
SIZE B	SHEET 1 OF 1	PART/DRAWING NUMBER CP3461 REV 1